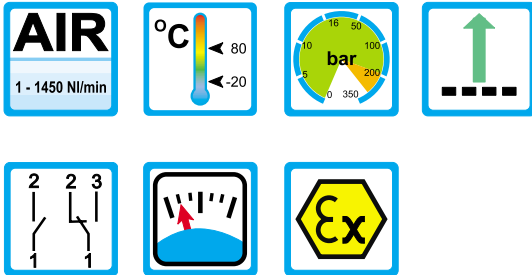


# Flow Monitor Flow Indicator

## DWM/A-L



### Range of Application

#### Operation

- Float measuring principle

#### Application

- Cooling systems and cooling circuits
- Mechanical engineering
- Medicine technology
- Pharma industry
- Chemical industry
- Research and development

#### Features

- High reliability
- High switch accuracy
- Wide switch range
- Infinitely variable switchpoint, adjustment through user
- EX-version to ATEX available
- High pressure resistance
- Threaded connection, special threads on request

#### Installation hints

- The operating instructions for DWM/A-L must be observed!
- Download: [www.meister-flow.com](http://www.meister-flow.com)

### Operating Data

Operating pressure max.	200 bar (Brass) 300 bar (Stainless steel)
Pressure drop	0,02 - 0,4 bar
Maximum temperature	80 °C
Accuracy	±10 % of full scale

### Measuring Ranges

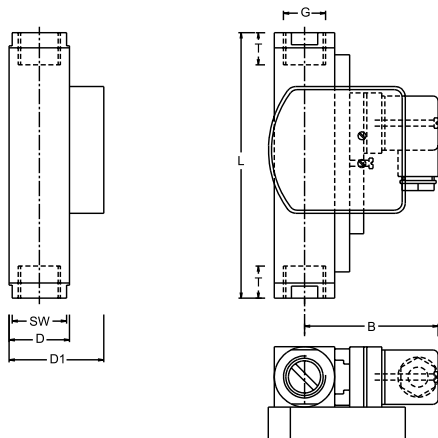
Type	Switch range for Air at 1 bar abs. and 20 °C <sup>(1)</sup>		
	[NI/min]	[SCFH]	[SCFM]
DWM/A-L1,5	1 - 28	2,0 - 59,0	
DWM/A-L3	4 - 60	8,0 - 127,0	
DWM/A-L8	6 - 160	15,0 - 340,0	
DWM/A-L12	20 - 240	40,0 - 510,0	
DWM/A-L18	40 - 360	80,0 - 760,0	
DWM/A-L50	60 - 700		2,0 - 24,5
DWM/A-L100	200 - 1450		11,0 - 106,0

<sup>1)</sup> The specified data are switch-off points, other switch ranges on request.

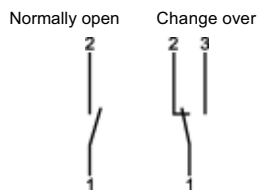


# Technical Data

## Mechanical drawing



## Connection diagram



## Summary of types

Type:	Overall dimensions [mm]								Weight approx. [g]
	SW	D	D1	B	G	DN	T	L	
<b>DWM/A-L1,5</b>					1/4"	8	14		
<b>DWM/A-L3</b>	27	30	47	71	3/8"	10	19	130	850
<b>DWM/A-L8</b>					1/2"	15	19		
<b>DWM/A-L12</b>					1/2"	15	19		900
<b>DWM/A-L18</b>	27	30	47	71	3/4"	20	17	148	1010
<b>DWM/A-L50</b>	34	40	57	76	1"	25	19	152	1400
<b>DWM/A-L100</b>	40	50	67	81	1"	25	20	156	1100
	50	50	67	81	1"	25	20	200	2800

## Electrical Data

**Change over** 250V • 1,5A • 50VA <sup>(2)</sup>

**Normally open** 250V • 3A • 100VA

**ATEX II 2 G Ex mb II T6 & ATEX II 2 D Ex tD A21 IP67 T80 °C**

**ATEX II 2 G Ex mb II T5 & ATEX II 2 D Ex tD A21 IP67 T100 °C**

**Change over** 250V • 1A • 30VA

**Normally open** 250V • 2A • 60VA

**Change over M 12x1 (-20 °C - 85 °C)** 250V • 1,5A • 50VA <sup>(2)</sup>

**Normally open M 12x1 (-20 °C - 85 °C)** 250V • 3A • 100VA

**Change over SPS** 250V • 1A • 60VA

### Ingress Protection:

IP65: plug connection DIN 43650 Form A

IP67: 1 m sealed in cable, (with EEx-version 2 m)

or plug connection M 12x1

### Output Signal

The contact opens / changes when the flow decreases below the set point.

### Power supply

Not required (potentialfree reed contacts)

### Plug types

Other plug types or cable lengths on request

<sup>(2)</sup> Minimum load 3 VA

## Material

### Brass Version

#### Wetted parts:

Float: POM

Gaskets: NBR

(optional FKM, EPDM) <sup>(3)</sup>

Brass

Threaded rings:

(only DWM/A-L-50, -100 (1"))

Centering washer:

Brass nickel-plated

(DWM/A-L-50)

Fittings:

Brass nickel-plated

(not for DWM/A-L-50, -100 (1"))

Indicator:

Makrolon / Brass nickel-plated

All other wetted parts: Brass nickel-plated

### Stainless Steel

#### Wetted parts:

Float: POM

Gaskets: FKM

(optional NBR, EPDM) <sup>(3)</sup>

1.4571

Threaded rings:

(only DWM/A-L-50, -100 (1"))

Centering washer:

1.4571

(DWM/A-L-50)

Fittings:

1.4571

(not for DWM/A-L-50, -100 (1"))

Indicator:

Makrolon / Brass nickel-plated

All other wetted parts: 1.4571

<sup>(3)</sup> Other gaskets materials on request