

Pressure Volume Controllers, Models AVC-1000 and AVC-3000

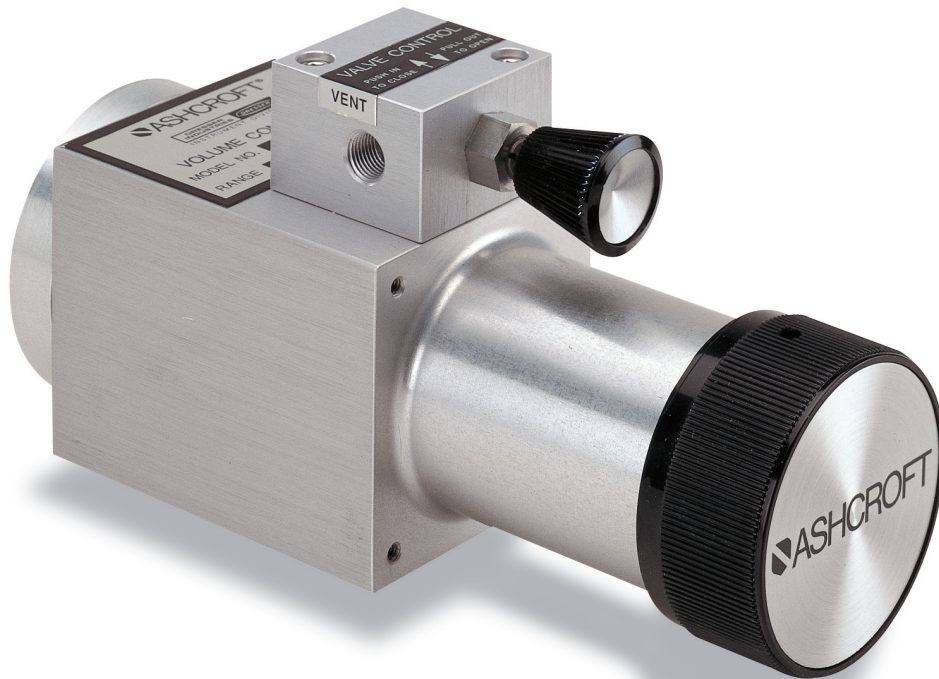
Ashcroft® Pressure Volume Controllers provide an easy-to-use means of rapidly and accurately adjusting pressure in a closed system. These pressure controllers provide the ability to precisely adjust pressure within 0.00025 psi. When used with digital pressure gauges, dial gauges, transducers, pressure switches, air deadweight testers, manometers and other similar devices they provide a fast and accurate means for setting a precise pressure.

Ashcroft® Pneumatic Controllers are available for use with pressures up to 3000 psi. Engineered to provide superior performance and safety, these devices incorporate a unique pressure balance valve. This valve is opened during initial system pressurization. When opened the valve provides equal pressure to both sides of the piston assembly. (See figure 1) After the system has been pressurized the valve is closed.

When the valve is closed a change in piston position will result in a change of pressure within the system. Simply turning the large pressure adjust knob repositions the piston to increase or decrease the pressure. Equalization of pressure on both sides of the piston assures ease of pressure setting.

In addition, the valve performs a safety function. The balance valve will open automatically if an excessive pressure differential is generated across the piston. In essence the valve serves as a safety relief valve and protects the controller from damage due to excessive pressure differentials within the unit.

Ashcroft® Pressure Volume Controllers are designed to provide ultra- high resolution, ease of use and long term dependable operation. This combination makes Ashcroft® AVC units the smart choice when you need a precision pressure controller.



These instruments are manufactured in accordance with MIL-I-45208A Inspections and Test Procedures and MIL-Std-45662A Calibration Procedures.

ISO 9001
REGISTERED FIRM

STANDARD SPECIFICATIONS

MODEL	AVC-1000	AVC-3000
Range (psi)	Vacuum-1000	Vacuum-3000
Proof (psi)	2000	6000
Burst (psi)	6000 min.	12,000 min.
Resolution (psi)	0.00025	0.0005
Volume Change (cubic inches)	3.5	2.5
Mechanical Rotation (total turns)	31	61
Connection	1/8" NPT Female	1/8" NPT Female
Operating Temp. Range	20/120°F degrees Fahrenheit	
Construction	Aluminium body, Stainless Steel, Brass, Teflon®, Delrin® and Buna-N	

Recommended applications include calibration and test of:

- Digital pressure indicators
- Dial gauges
- Pressure transducers
- Pressure switches

To order please specify:

- Model Number
- Panel or Optional Bench Mounting

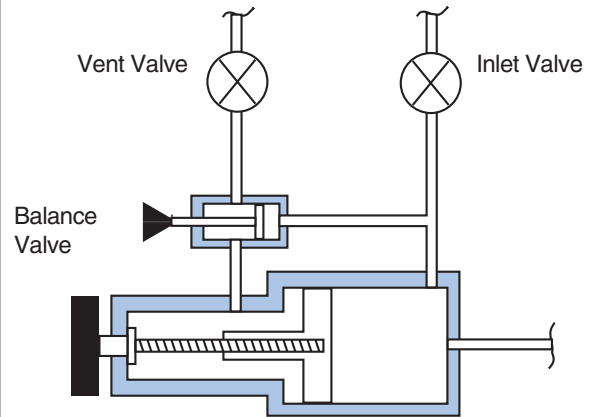


Newtown Operations

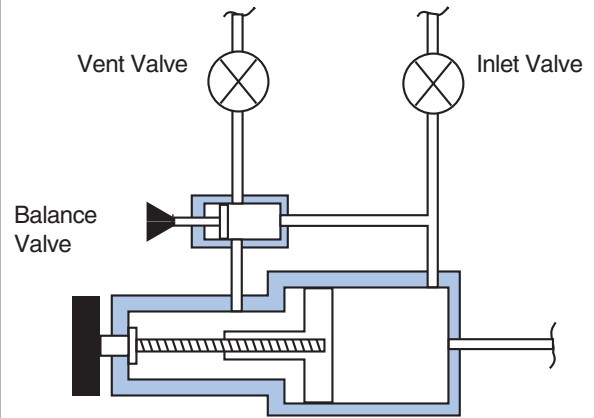
153 South Main Street
 P.O. Box 5605
 Newtown, Connecticut 06470-9943
 Tel: 203-426-3115
 Fax: 203-426-4349
 www.ashcroft.com

INTERNAL FLOW DIAGRAM

(figure 1)



Balance Valve Open System in Pressure Balance or Vent Mode



Balance Valve Closed System in Test Mode

DIMENSIONS

