

Features

- * Direct acting.
- * Quick response.
- * Stainless steel body and stem provide exceptional durability.
- * Flange type is available for JIS 10K, ANSI 150LB and PN16.
- * Ex-proof coil T4 as optional accessory.
- * Timer for setting on/off time as optional accessory.



How to order

SPU220	A	E	F - O4	N - S	1	LED	E		
Stainless steel 2/2 way direct acting	Series	Diaphragm	Flange type	Port size	Thread	Solenoid	Voltage	LED	Ex-proof coil
	Blank	VITON	F 10K	O4 1/2"	Blank PS	1 110VAC	Blank W/O LED		
	E	EPDM	F3 150LB	O6 3/4"	N NPT	2 220VAC			
	B	NBR	F4 PN16 only for A series			9 24VDC			

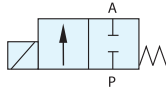
Specifications

Model	SPU220A-O4	SPU220A-O6
Port size	1 / 2 "	3 / 4 "
Fluid	Compressed air (light oil, water)	
Orifice	13mm	20mm
Sectional area	76mm ²	162mm ²
Acting	Direct acting	
Construction	Diaphragm	
Operating pressure range AC	0 ~ 7 kgf/cm ²	
Operating pressure range DC	0 ~ 6 kgf/cm ²	0 ~ 5 kgf/cm ²
Max. operating pressure	10 kgf/cm ²	
Body material	Stainless steel SUS316	
Fluid temperature	-10°C ~ 185°C	-10°C ~ 90°C
Ambient temperature	-20°C ~ 60°C	-10°C ~ 60°C
Installation	Horizontal	
Duty cycle	100% ED	
Coil type	DIN	
Protection class	IP65 (DIN 40 050)	
Insulation class	F	
Voltage tolerance	±10%	
Standard voltage	220VAC, 110VAC, 24VDC The other voltage is optional	
Power consumption	AC110V:17.6VA, AC220V:18.1VA, DC: 15W	
Net weight	715g	920g

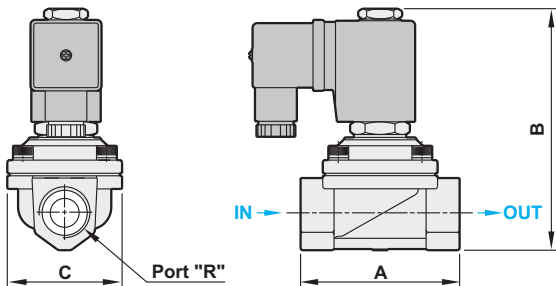
Seal material selection guide

Seal	Temperature range	Suitable fluid	Unsuitable fluid
NBR	-15°C ~ 80°C	Air, Water, Neutral gases, Mineral oil	Fuel oil, Gasoline and Hi-test gasoline, Diesel fuel
VITON	-10°C ~ 130°C	Fuel oil, Gasoline and Hi-test gasoline, Diesel fuel	Hot water, Steam, Brake oil (ATE Blue)
EPDM	-5°C ~ 160°C	Hot water, Detergent liquid	Mineral oil, Gasoline

Dimensions



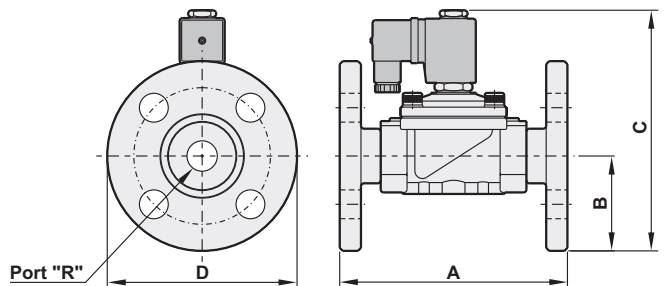
SPU220A-04, 06 Standard type



(mm)

Model	SPU220A-04	SPU220A-06
R	1/2"	3/4"
A	66.5	71.0
B	101.0	107.0
C	48.0	58.0

SPU220A-04, 06 Flange type (10K)

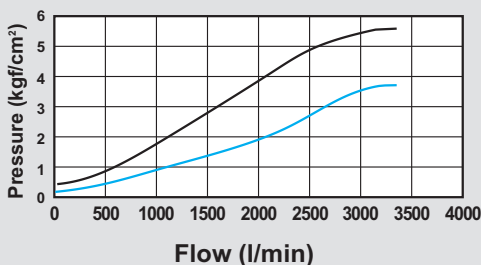


(mm)

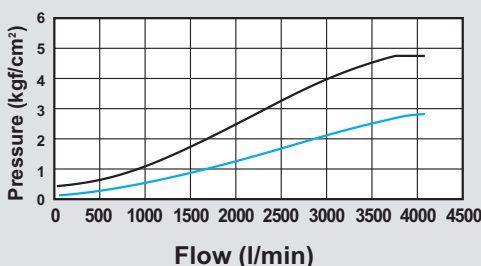
Model	SPU220AF-04	SPU220AF-06
R	1/2"	3/4"
A	110.0	120.0
B	47.5	50.0
C	133.0	138.5
D	95.0	100.0

Flow chart

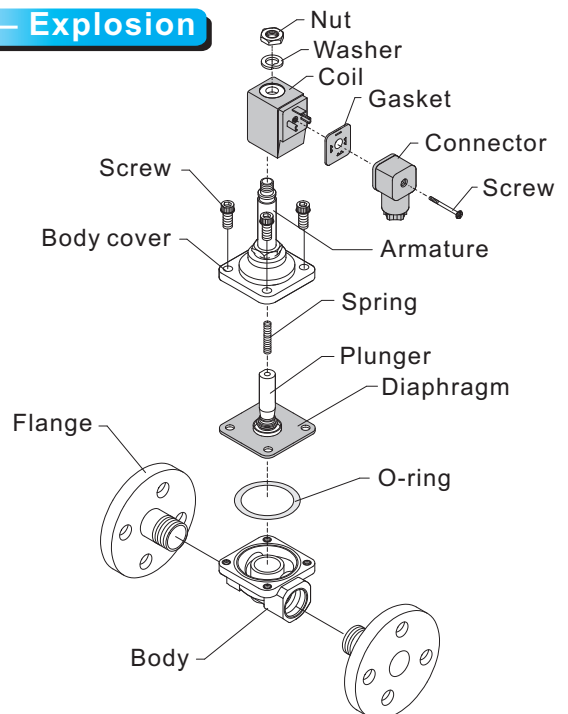
Model: SPU220A-04



Model: SPU220A-06



Explosion



2/2 WAY SOLENOID VALVES